

**A Frame Setup steps**  
It is recommended that you get a helper to setup together.

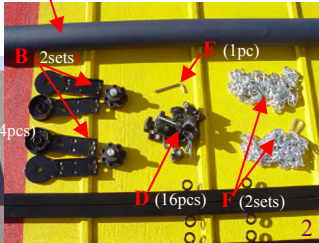


1. Most likely you will receive three boxes of each A-frame in the shipment

2. Check components. You should have all of the following. If anything is missing, please contact your supplier at once.

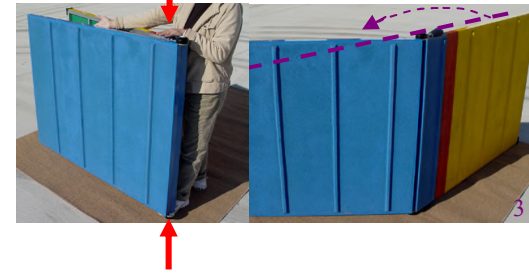


**Part Notation and Qty**



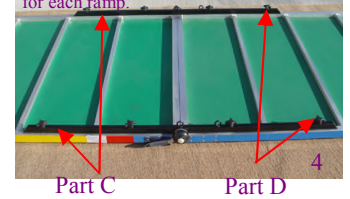
**3 Open the ramps:**

Use one foot and one hand to squeeze-push lock handles at the same time like the red arrows indicated to release the latches. Use the other hand to push open the ramp until the ramp locks in open position.



**4 Reinforce the ramps**

Flip over the opened ramps and install part C with part D to reinforce the ramps. (use one set of part C(2pcs) and half of part D(8pcs) for each ramp.

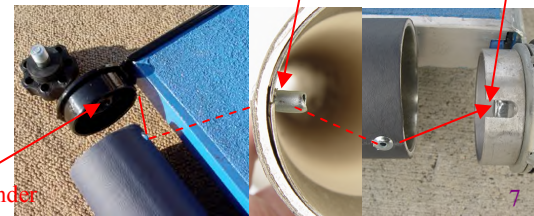


**5. Install ramp connector A & B.**



There 2 hinge screws on each side of ramp

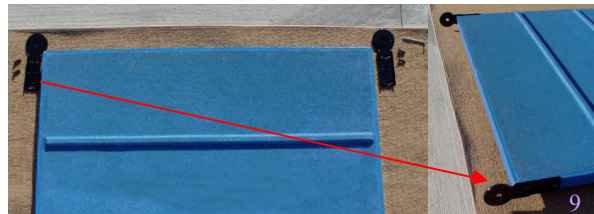
7. **Secondly**, put part A onto the cylinder cap that has been tightened on one side of the ramp. Make sure to match the rivet on the cylinder into the groove on the cylinder cap.



8. **Then**, match the 2<sup>nd</sup> cylinder cap onto the cylinder, and tighten it to the other side of the ramp as picture indicates. Note: this step does not use any hinge knobs in part B

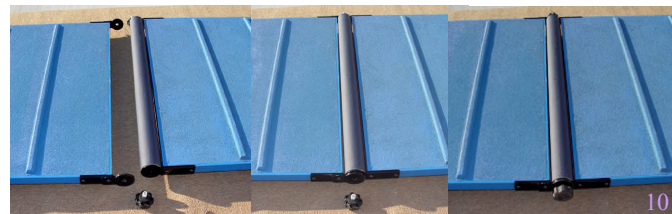


9 **Finally**, install the hinge plates to the 2<sup>nd</sup> ramp. Refer to the installation of cylinder caps on the first ramp.



**10. Connect 2 ramps together.**

Move 2<sup>nd</sup> ramp close to the first one. Make sure the hinge plates match out side of cylinder caps. Then use hinge knobs in part B to tighten two ramps together.



**11. Link 2 ramps with chains to construct an A-frame.**

Put connected ramp sideways in an angled position and make sure the ramp splits in an angle that meets your desired ramp distance.



12. Connect one side of part F to the one of rings on part C which is the reinforce bar under the ramp



13. You may need an adjustable ranch to loosen and tighten one end of part F.



14. The other end of part F is a snap hook. You need to hook two Fs of the same length to the ramp



15. **Final Step: Set the A-frame upright.** Lift A-frame in upright position. Congratulations! Your setup is finished.



If you want to take down the A-frame, you can reverse the steps to disassemble it.

This product is solely designed with patent pending and produced by:

Pacific Rim International, Inc.

Contact: email only  
prii@att.net